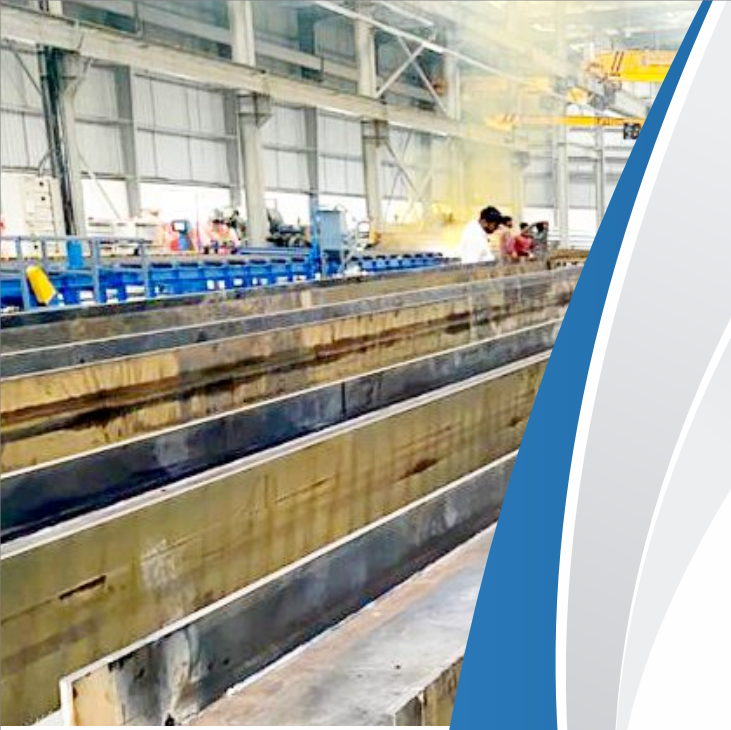




Pre-Engineered Buildings



BEST BRAND AWARD



Index

| | |
|---|----|
| Vision, Mission and Company Profile | 01 |
| Management Profile | 02 |
| Insight of Manufacturing Unit | 03 |
| Standard Frames Types & Mezzanine | 05 |
| Cranes | 06 |
| Standard Staircase and Jack Beam | 07 |
| Type of Fascia | 08 |
| Standard Profile and Standard Panel Colours | 09 |
| Standard Flashings | 10 |
| Standard Accessories | 11 |
| Project Photos | 12 |





Vision

To be the most preferred innovative turnkey solution provider across the Pre-Engineered Buildings market segment.

Mission

Konart Steel Buildings Pvt. Ltd. will stay committed for delivering high-quality Pre-Engineered Buildings in a time-bound manner. We shall strive to deliver value-added products by employing innovative technologies, Machines, methodologies, and motivated Human resources. We shall be focused on continuous improvement of our product & services while observing the highest business standards & work ethics.

Company Profile

Konart Steel Buildings Pvt Ltd (KSBPL) is the most promising Pre-Engineered Building Solution provider having Plant & Corporate Office at Ahmedabad.

Konart Steel Buildings Pvt. Ltd. (KSBPL) started its operation in 2019 with the vision to give customized, reliable, prompt, and value-added services for the Design, Manufacturing, and installation of Pre-Engineered buildings.

KSBPL has a state-of-the-art manufacturing facility in the Ahmedabad district of Gujarat. KSBPL has all the modern and highly efficient machinery required to produce high-quality Pre-Engineered buildings. The production capacity of our plant is 24,000 MT per annum and It is expandable up to 35,000 MT per annum in the future. The manufacturing facility is spread over 1,50,000 Square feet area and having reserve space around 1,50,000 Square feet area for future expansion.

KSBPL has an in-house design team that consists of experienced and qualified designers and detailers. The design office is based in Hyderabad. KSBPL has an experienced project team in abundance to look after and ensure smooth execution of the project at the Site.

KSBPL is having a wide range of customer base in various sectors like Warehousing, Engineering, Pharmaceutical, Chemical, Food, Showroom, Multilevel Building, Automobile, Cold Storage Chains, Steel, etc.



Management Profile

About the Founders

Konart Steel Buildings is founded by three young professionals with rich experience in the field of the Pre-Engineered building segment. The Foray of founders in the entrepreneurial segment is guided by their streak to be a differentiator in the Pre-Engineered Buildings market and their strong market credentials.

Mr. Sumit Rustogi

Mr. Sumit Rustogi is a young and dynamic person with graduation in BE Mechanical and post-graduation in MBA (Marketing & Finance). He is having experience of 15 years in the Pre-Engineered Buildings segment. He has rich experience in the PEB industry and executed about 1500 Buildings for various segments like Warehousing, Automotive, Textile, Process plants, Plastics, Chemical, Pharma, and Food, etc.

Mr. Krishan K. Pathak

Mr. Krishan Kumar Pathak is a young professional with a bachelor's degree in technology (B. Tech-Mechanical). He has versatile experience in different engineering product segments & had worked with Indian and MNC organizations for the first 12 years of his carrier. Mr. Krishan also has a rich experience in handling projects for various segments for renowned organizations.

Mr. Dhaval Patel

Dhaval Patel is having 12 years of experience in the execution of Pre-Engineered buildings successfully. He has proved his skills by timely & quality execution of many complex projects for Indian & offshore MNC organizations like ABB / Siemens / Ammann Apollo / Dow Agro sciences / MG Motors / HNG Float glass / Hamilton Housewares / AG Industries / Endurance / Badve Engineering & many more.

Manufacturing Unit



CNC Oxy Fuel Plasma



Automatic H-Beam Line



C/Z Profile Machine



Hi Rib Sheet Profile Machine



SSR Profile Machine



Sheet Slitting Machine



Shot Blasting Machine



CNC Punching Machine



CNC Sheet Bending Machine



Downtake Pipe Profile Machine



Angle Profile Machine



Downtake Elbow Machine



Sheet Curving Machine



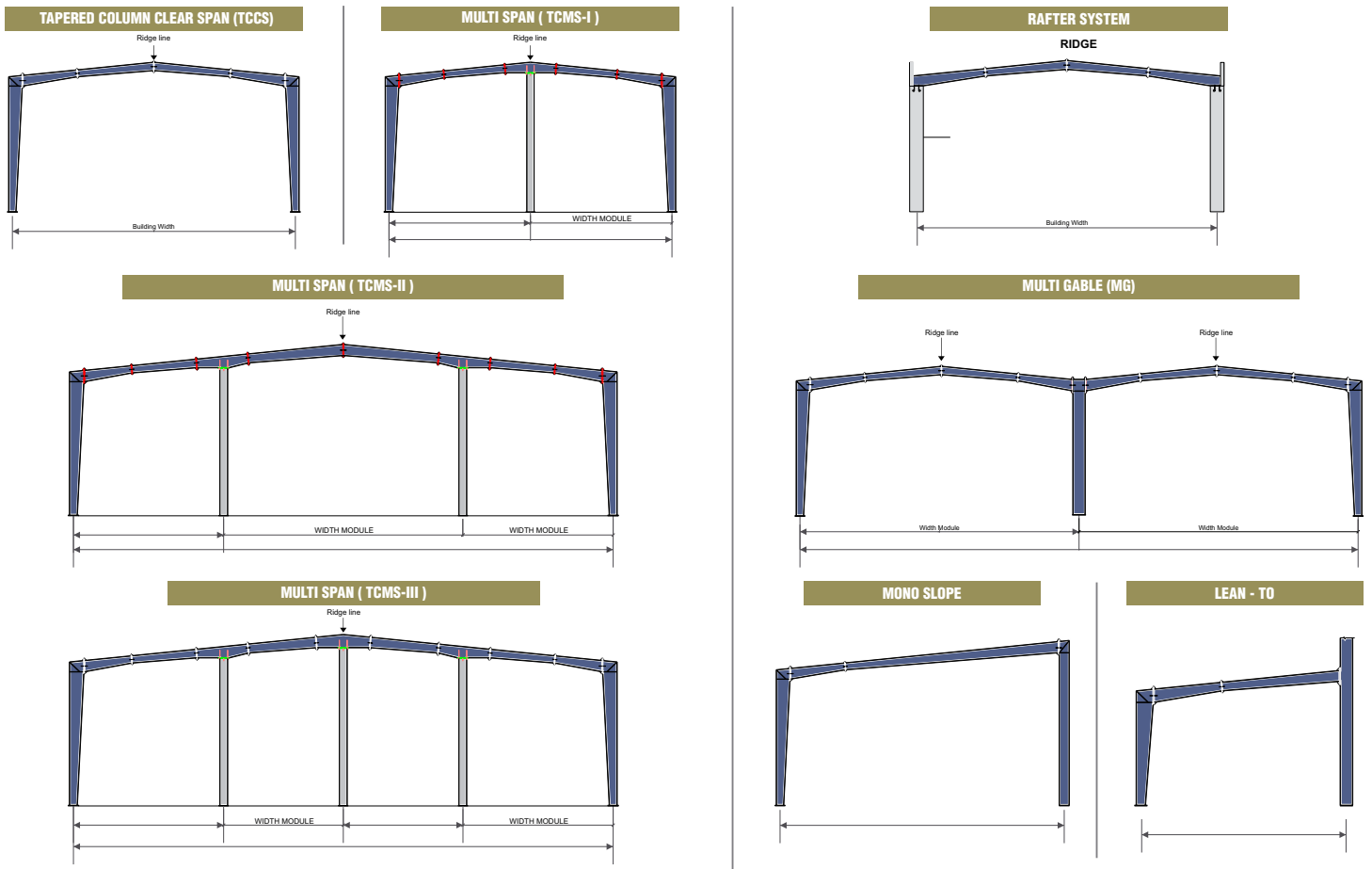
Anchor bolt Threading Machine

Major Machineries

- ▶ CNC Oxy Fuel Plasma
- ▶ Automatic H-Beam Line
- ▶ C/Z Profile Machine
- ▶ Hi Rib Sheet Profile Machine
- ▶ SSR Profile Machine
- ▶ Sheet Slitting Machine
- ▶ Shot Blasting Machine
- ▶ CNC Punching Machine

- ▶ CNC Sheet Bending Machine
- ▶ Downtake Pipe Profile Machine
- ▶ Angle Profile Machine
- ▶ Downtake Elbow Machine
- ▶ Sheet Curving Machine
- ▶ Anchor bolt Threading Machine
- ▶ PHI Welding
- ▶ Plate Bending Machine
- ▶ SAG Angle / FBC Profile Machine

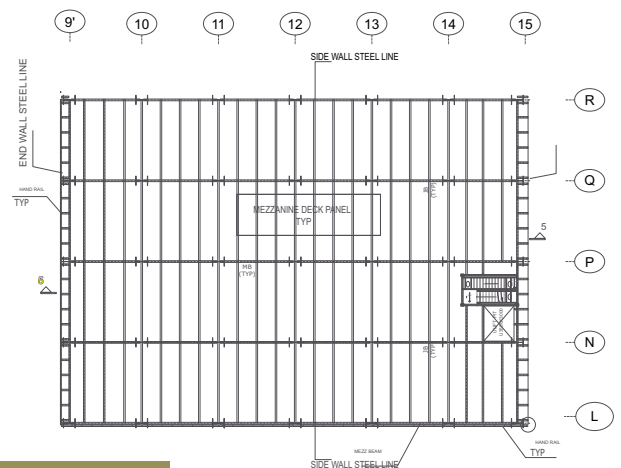
STANDARD TYPE OF FRAME



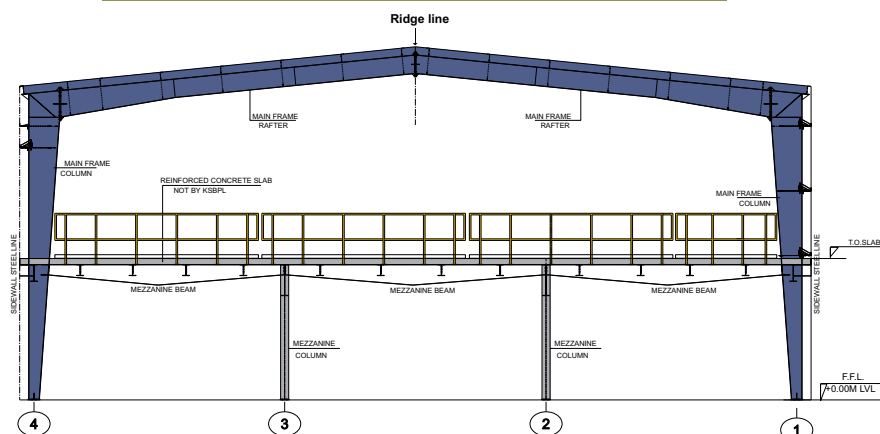
MEZZANINE

Mezzanine floors are very common in PEB buildings nowadays as they are suitable for various applications like office, storage, processing plant, etc. KSBPL mezzanine floor consists of galvanized deck sheet or chequered plate as per the requirement of the project. This may be installed with Gratings also for special applications. The typical framing system of the mezzanine consists of beams & Joists.

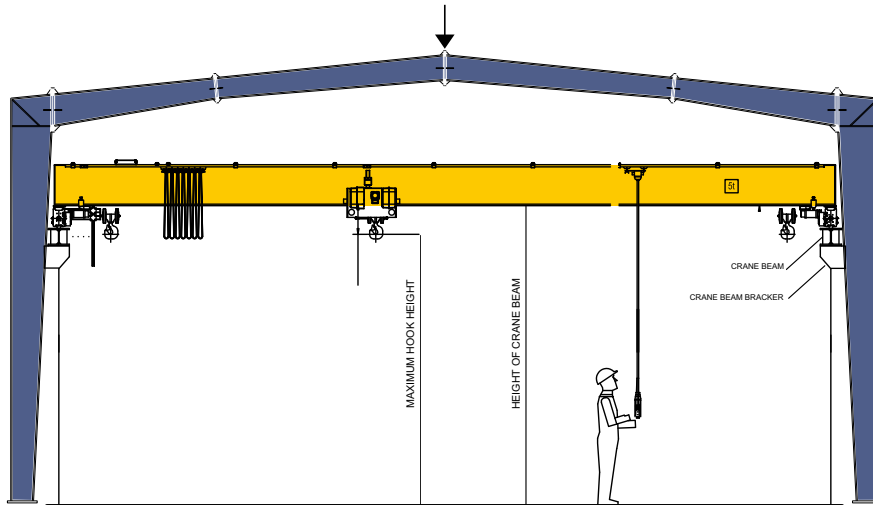
MEZZANINE FRAMING PLAN



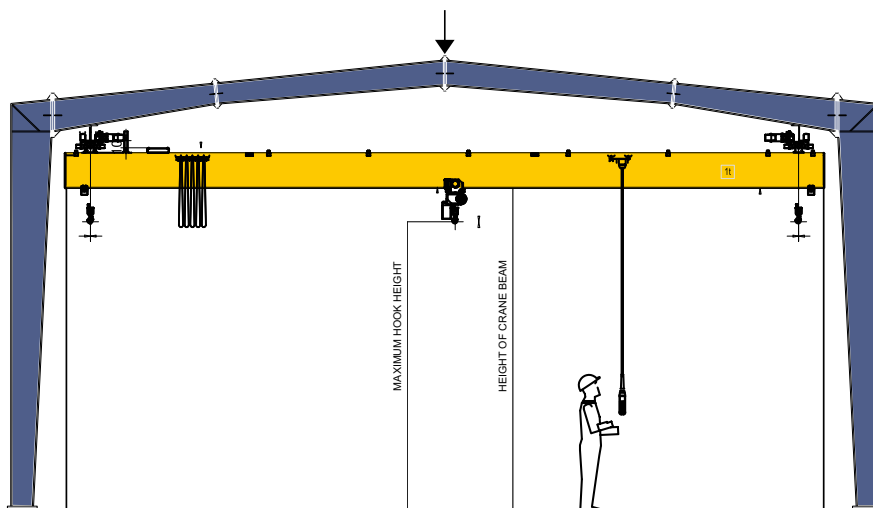
MEZZANINE FRAMING ELEVATION



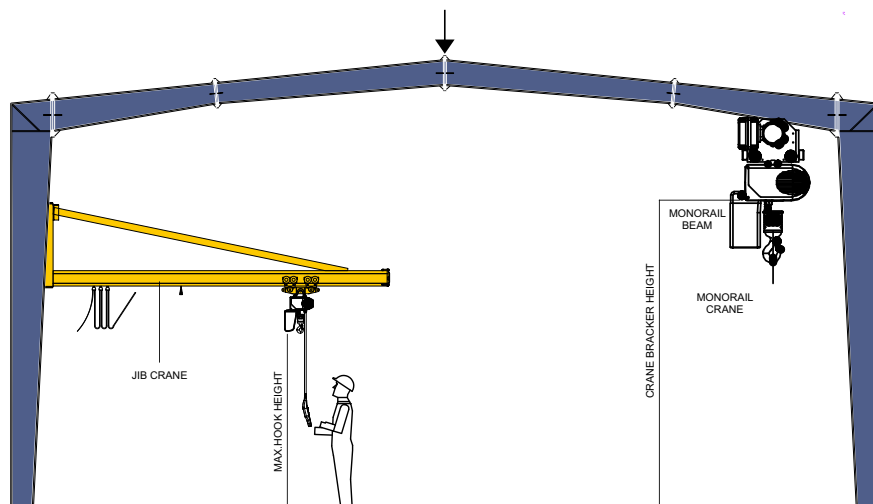
EOT CRANE



UNDER SLUNG CRANE

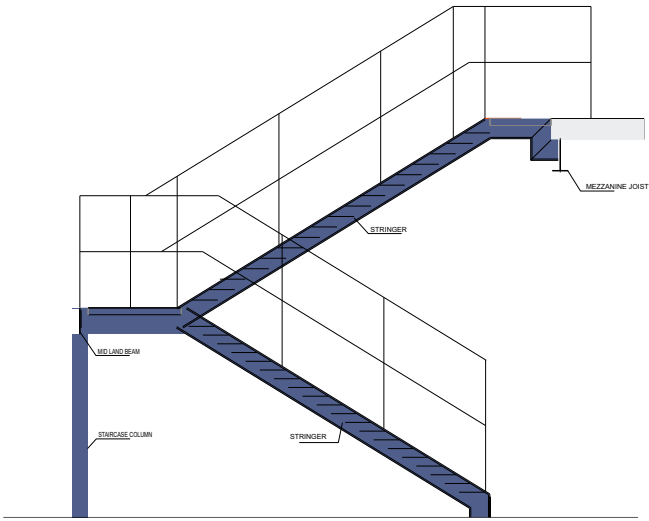


JIB CRANE

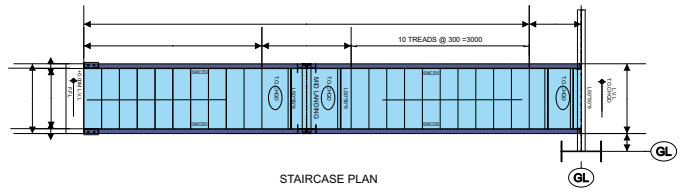
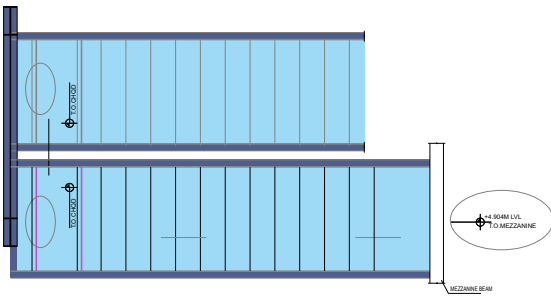
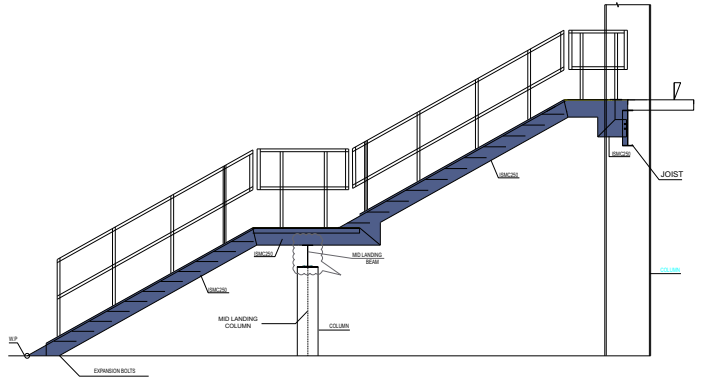


STAIRCASE

ELEVATION - DOUBLE FLIGHT STAIRCASE

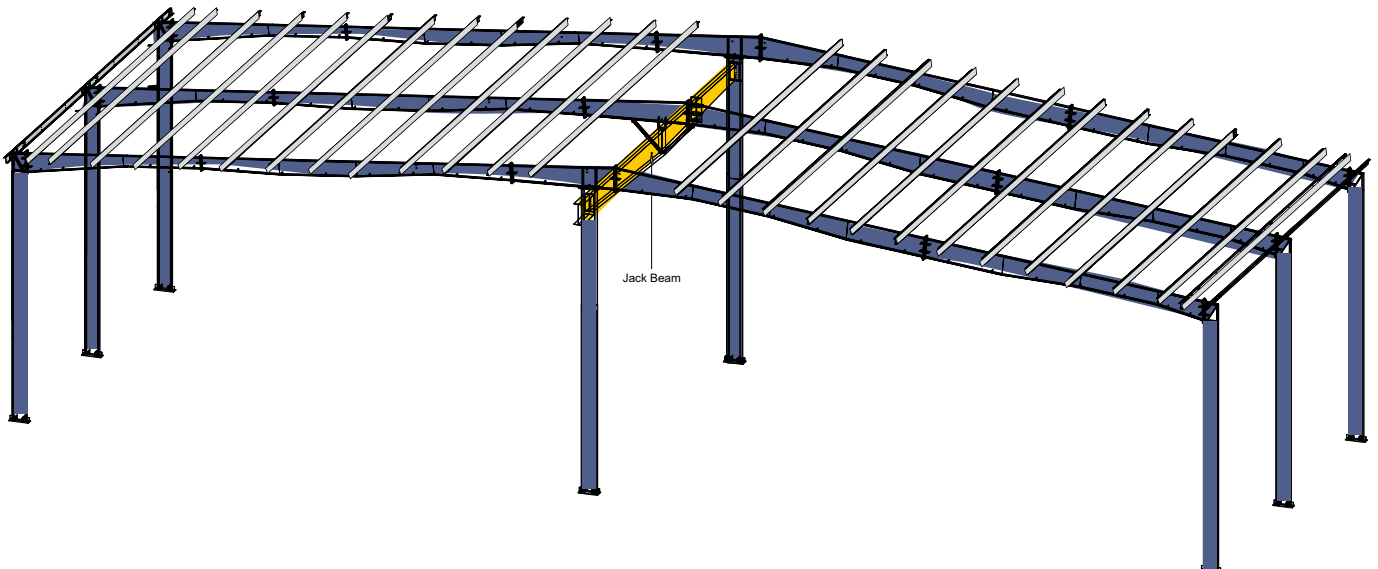


ELEVATION - SINGLE FLIGHT STAIRCASE



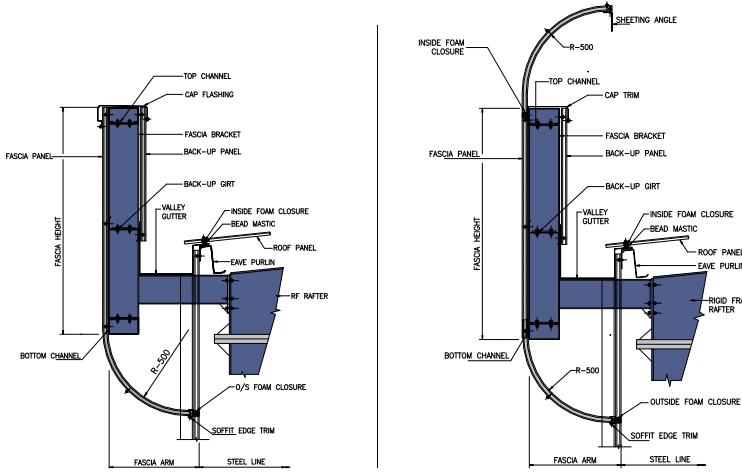
STAIRCASE PLAN

JACK BEAM



FASCIA

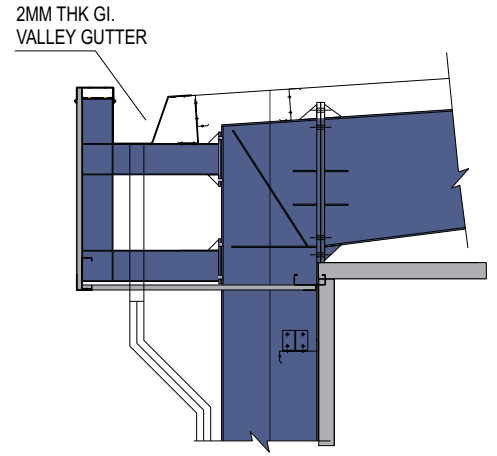
PROJECTED CURVED FASCIA



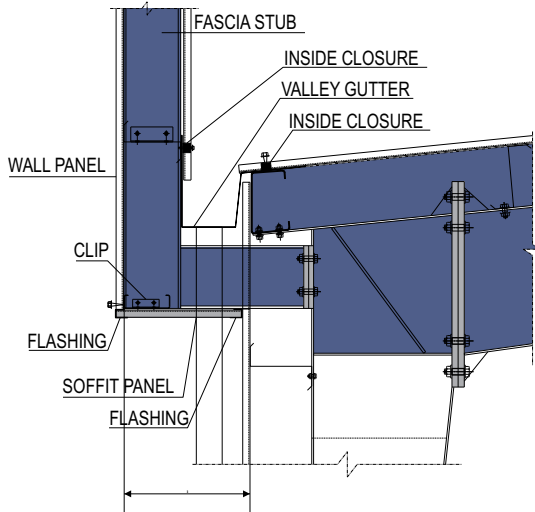
BOTTOM CURVED FASCIA

BOTTOM & TOP CURVED FASCIA

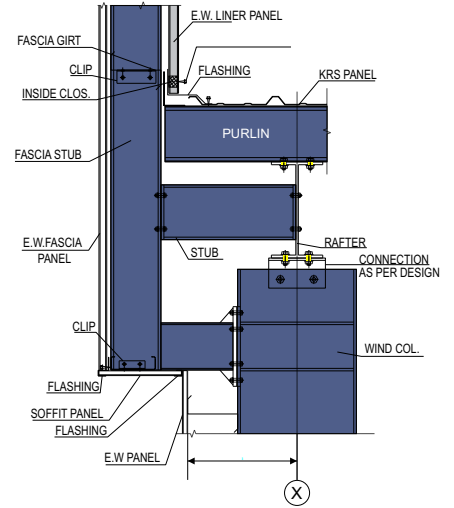
GUTTER COVERING FASCIA



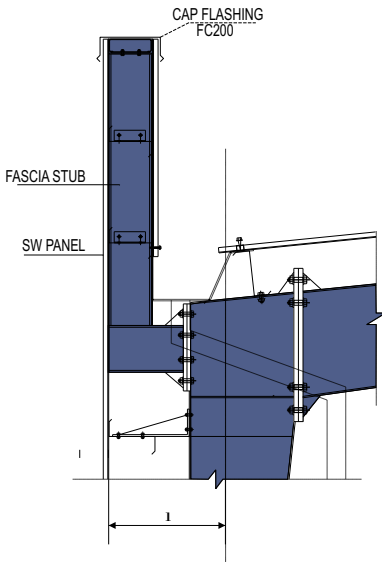
PROJECTED FASCIA SIDE WALL DETAIL



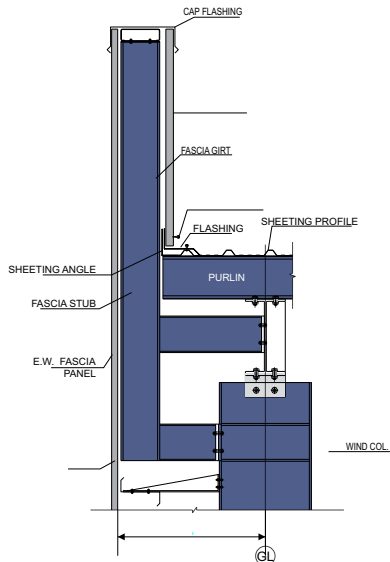
PROJECTED FASCIA END WALL DET.



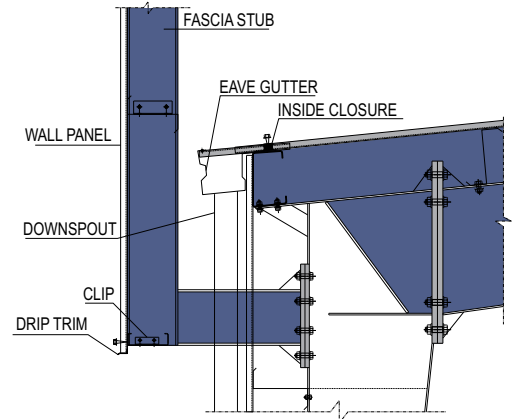
FLUSH FASCIA SIDE WALL DETAIL



FLUSH FASCIA END WALL DETAIL

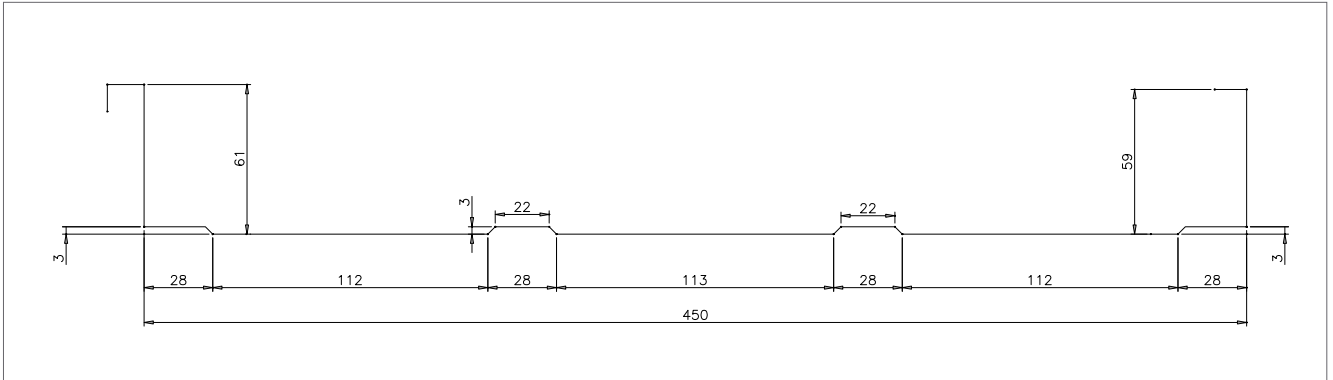


PROJECTED FASCIA WITH EAVE GUTTER

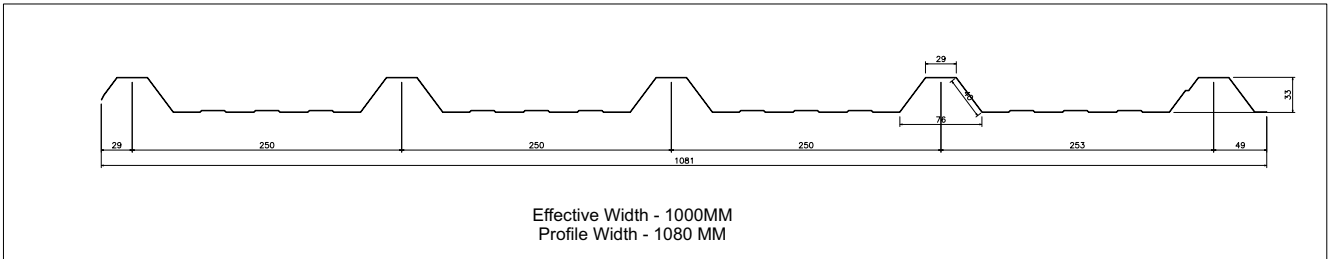


SHEETING PROFILE

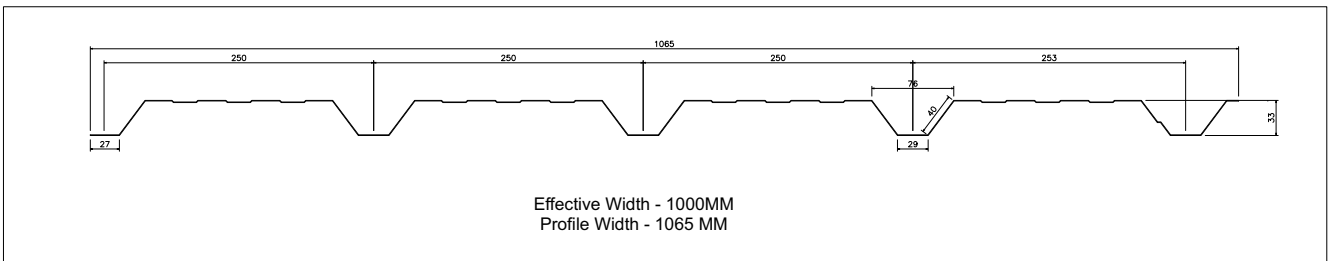
STANDING SEAM SHEET PROFILE



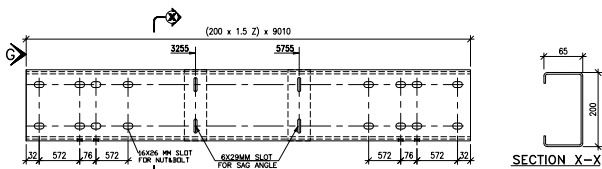
KSBPL HI-RIB ROOF/SHEET PROFILE



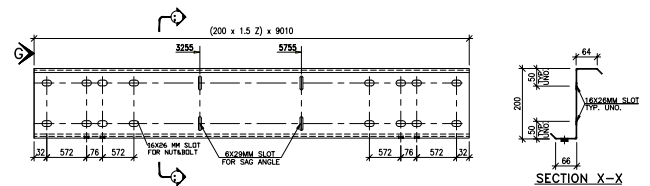
KSBPL HI-RIB REVERSE



C-Z PROFILE



200C SECTION COMMON DETAIL



200 Z SECTION COMMON DETAIL

STANDARD SHEETING COLOR

RAL 9002
OFF WHITE



RAL 5012
SKY BLUE



RAL 7037
GREY



TAURUS
BLUE



MIST
GREEN



BARE
GALVALUME

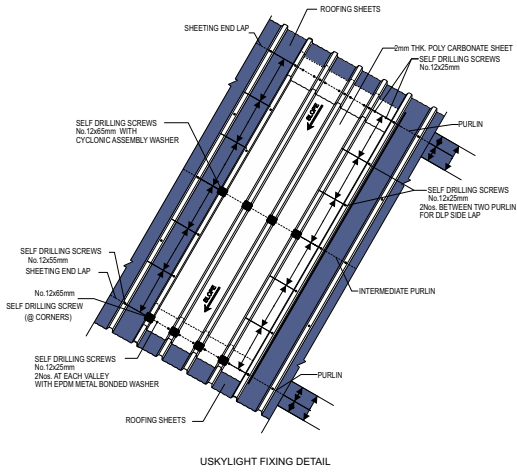


STANDARD FLASHINGS & TRIMS

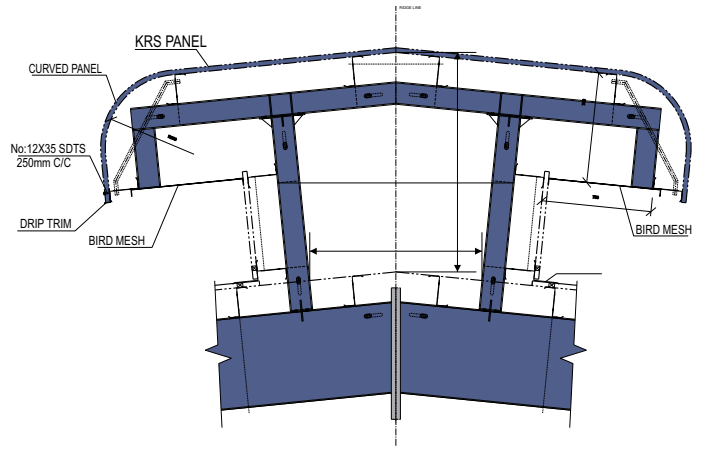
| | | | |
|--|--|--|--|
| <p>STRETCH OUT 451 GABLE TRIM (GT1)</p> | <p>STRETCH OUT 610 RAVE GUTTER (GU1)</p> | <p>STRETCH OUT 332 RAVE TRIM (ETL)</p> <p>STRETCH OUT 451 HIGH RAVE TRIM (HET1)</p> | <p>STRETCH OUT 400 OUTSIDE CORNER TRIM (OT1)</p> |
| <p>GENERAL NOTES: ◀ - DENOTES COLOR SIDE OF FLASHING</p> <p>STRETCH OUT 200 FASCIA SILL TRIM (FST-1)</p> <p>STRETCH OUT 125 FASCIA SILL TRIM (FST-2)</p> | <p>STRETCH OUT 300 MASONARY TRIM--MT1</p> <p>STRETCH OUT 160 DRIP TRIM(DTL)</p> | <p>STRETCH OUT 413 TRANSITION TRIM (TT1)</p> <p>STRETCH OUT 150 JAMB TRIM (JT1)</p> | <p>WINDOW JAMB TRIM</p> <p>STRETCH OUT 355 JAMB TRIM (JT2-200)</p> <p>STRETCH OUT 405 JAMB TRIM (JT2-250)</p> |
| <p>STRETCH OUT 507 CAP FLASHING FOR 200Z--FC200</p> | <p>STRETCH OUT 557 CAP FLASHING FOR 250Z--FC250</p> | <p>WINDOW BOTTOM TRIM</p> <p>STRETCH OUT 385 BOTTOM TRIM (BT1-200)</p> <p>STRETCH OUT 435 BOTTOM TRIM (BT1-250)</p> | <p>STRETCH OUT 330 TF-01</p> <p>STRETCH OUT 406 INSIDE CORNER TRIM (IT1)</p> |
| <p>STRETCH OUT 300 FASCIA TRANSITION FLASHING (FT1) UNIT WEIGHT - 1.18</p> | <p>APRON TRIM --</p> <p>STRETCH OUT 200 AT-2</p> <p>STRETCH OUT 405 AT-1</p> <p>APRON TRIM</p> | <p>STRETCH OUT 88 SP</p> <p>STRETCH OUT 370 ANGLE TRIM (ANT1)</p> <p>STRETCH OUT 370 ANGLE TRIM (ANT2)</p> | <p>STRETCH OUT 150 BASE ANGLE (BA1)</p> <p>RIDGE PANEL(RD-1)</p> |
| <p>STRETCH OUT --500X418X0.5THK</p> <p>DOWN TAKE PROFILE</p> <p>DS-004 75 DEG (BEND DOWN) DOWNSPOUT ELBOW</p> <p>STRETCH OUT 590 DOWNTAKE STRAP(DS1)</p> | <p>STRETCH OUT 185 DOWNTAKE SPACER(DSF1)</p> | <p>STRETCH OUT 150 RAVE ANGLE (RA1)</p> <p>STRETCH OUT 150 RAVE ANGLE (RA2)</p> <p>STRETCH OUT 150 SHEETING ANGLE (SA1)</p> <p>STRETCH OUT 100 RAKE ANGLE (RA1)</p> <p>STRETCH OUT 250 SHEETING ANGLE (SA2)</p> | <p>STRETCH OUT 150 CORNER ANGLE CA1</p> <p>GUTTER STRAP(GS1)</p> <p>GUTTER STRAP(GS2)</p> <p>SHEETING SUPPORTING CLIP SCL1</p> <p>STRETCH OUT 100 BEND 90</p> |

STANDARD ACCESSORIES

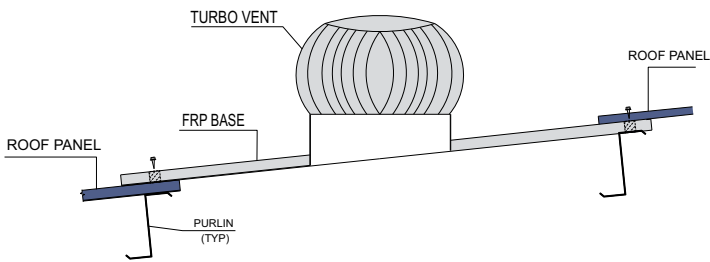
STANDARD SKY LIGHT PANEL DETAIL



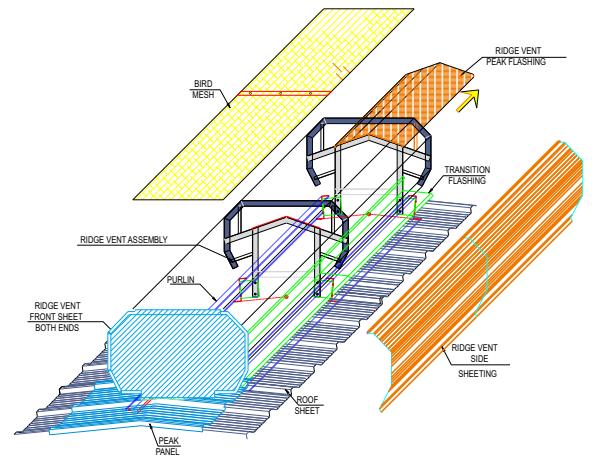
ROOF MONITOR DETAIL



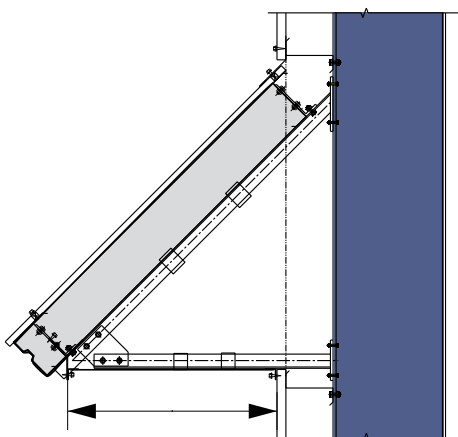
SECTION AT TURBOVENT PANEL



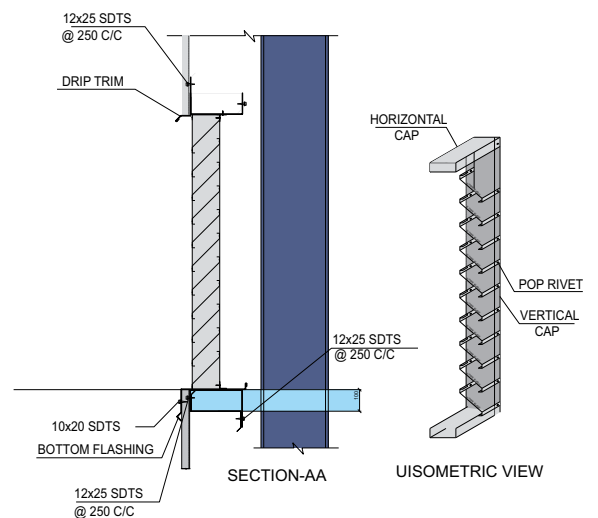
RIDGE VENT



INDUSTRIAL LOUVER



S TYPE FIXED LOUVERS



PROJECT PHOTOS

Sunrise Hi-Tech



Project Highlights :

- Building Area - 3000 Sq. M
- Designed with Shearing beams
- Project Location - Mehsana

Nandigram Realtors



Project Highlights :

- Building Area - 8200 Sq. M
- Project Location - Valsad

PROJECT PHOTOS

Shivani Motors (Desai Infrastructure Pvt. Ltd.)



Project Highlights :

- Building Area - 9200 Sq. M
- Project Location - Surat

Lubigel (Distillation Plant & Process Plant)



Project Highlights :

- Building Height - 30m
- Mezzanine - 6 Floors
- Project Location - Savli, Vadodara



Project Highlights :

- Building Height - 22m (G+4)
- Crane - 8 Nos Mono Rail & 1 No 5MT
- Project Location - Savli, Vadodara

PROJECT PHOTOS

Gokul Refoils and Solvents Ltd



Project Highlights :

- Building Area - 3000 Sq. M
- Number of buildings - 2
- Project Location - Kandla

Asset Empire CO



Project Highlights :

- Building Area - 10500 Sq. M
- EOT Crane - 5MT
- Mezzanine - 1500 Sq.M
- Project Location - Ahmedabad

PROJECT PHOTOS

Gandhi Realty



Project Highlights :

- Building Area - 10300 Sq. M
- Project Location - Jalisana, Ahmedabad

CMD Infrastructure (John Engineering)



Project Highlights :

- Building Area - 3500 Sq. M
- Cranes - 2 Nos. EOT crane each 5 MT capacity
- Project Location - Mehsana

PROJECT PHOTOS

Shreyas Infrastructure



Project Highlights :

- Building Area - 4500 Sq. M
- Project Location - Mundra

S A Logistics (Ashwika Warehousing)



Project Highlights :

- Building Area - 3000 Sq. M
- Project Location - Ahmedabad

PROJECT PHOTOS

SNK Infranetwork (Zydus Cadila)



Project Highlights :

- Building Area - 1715 Sq. M (G+1)
- Project Location - Changodar, Ahmedabad

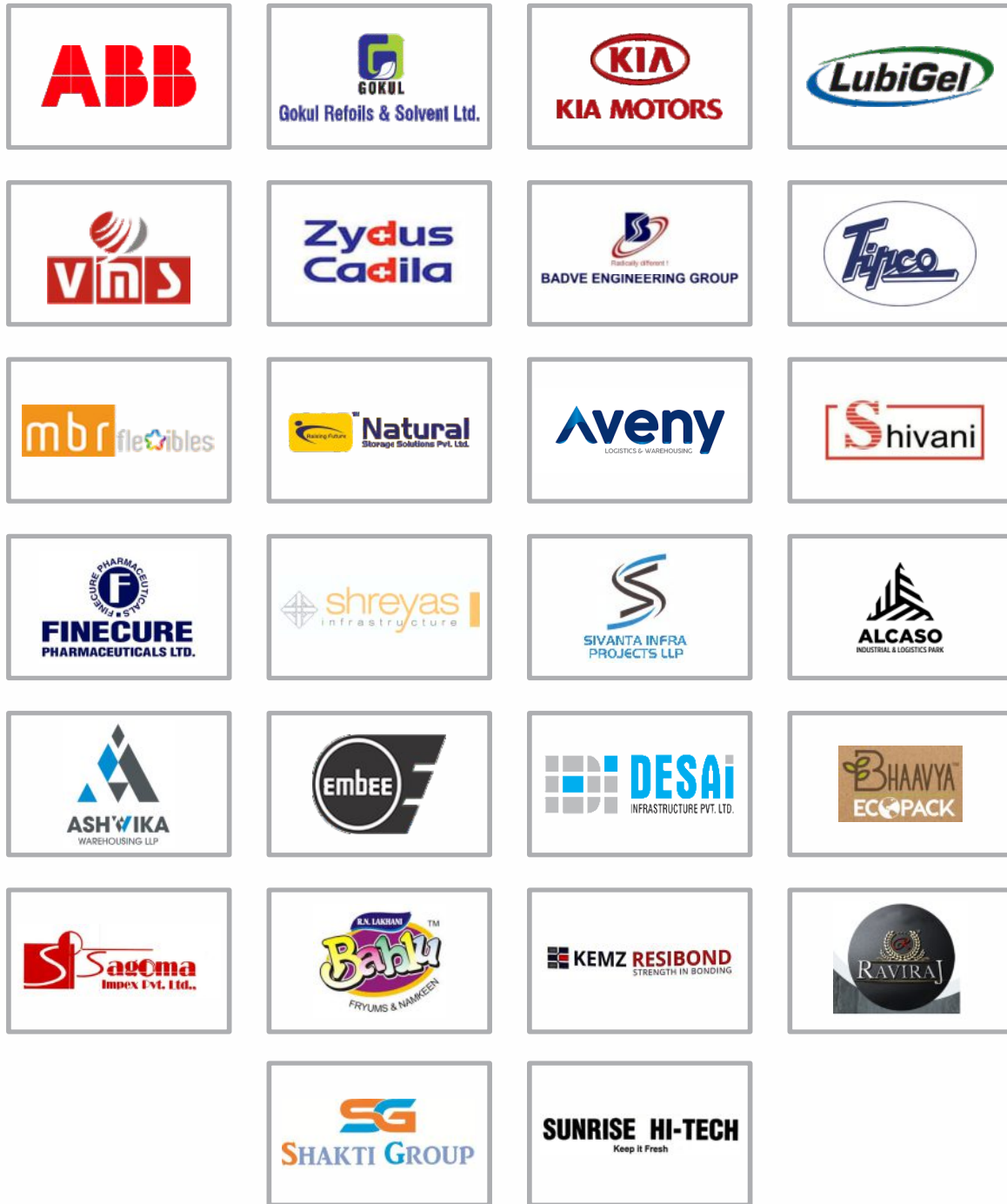
Sivanta Infra Projects (Teminous-2)



Project Highlights :

- Building Area - 33500 Sq. M
- Mezzanine - 3600 Sq. M
- Project Location - Ahmedabad

OUR VALUABLE CLIENTS



Corporate Office :

D-2010/2011, Sun Central Place,
Nr Bopal Circle, SP Ring Road Ambli,
Ahmedabad-380059, Gujarat
E-mail : info@konartsteel.com
Call : +91 95376 76627
+91 90999 02956

Plant Address :

Survey Number 641-643,
Village-Rupal, Taluka-Bavla,
District-Ahmedabad-382 220
Call: +91 95588 08183
+91 82792 27182

Other Locations :

Vadodara
Surat
Mumbai
Hyderabad
Jaipur